



Ontario, *Yours to Discover*

Fall Colour Progression Report

Ontario Tourism Marketing Partnership Corporation

Ontario Travel Information Centre

21 Mapleview Drive E

Barrie, ON L4N 9A9

Tel: (705) 725-7280 or 1-800-567-1140

Fax: (705) 725-7285

Welcome to the fall colour report for **Thursday, October 12, 2017**. The **Fall Colour Progression Report** is produced weekly and posted on www.ontariotravel.net from early September to mid-October and is designed to help you discover great scenic lookouts, fall driving and hiking tours, special fall packages, community events and studio tours. Plan your perfect Ontario fall escape now!

Ontario is the premier destination to enjoy the annual spectacle of summer's lush greenery transformed into a mosaic of magnificent rich shades of red, orange and yellow. It is also harvest time, the perfect time to hop into the car to discover local flavours at farmers markets, orchards and pumpkin patches, and take in the sights and special events. [Go online](#) for lots of great suggestions on how to enrich your fall colour touring experience.

The reds of the red maple and oranges of the sugar maple have really popped over the last few days and more areas of the province are reporting a colour change in and around 50%. In the north, particularly the northern end of Agawa Canyon, the reds have begun to fall; most areas across the province are reporting seeing leaves falling before they hit peak colour this year. Colours have peaked in Algonquin Park along the Hwy 60 corridor. There are still several pockets to enjoy but they are not expected to last long. Further south and east, regions are reporting a nice bump in colour this week.

As you make your plans to hit the road and enjoy the changing scenery check our [online calendar](#). There are many wonderful seasonal events to get out and enjoy - from apple picking to pumpkin festivals to artisan tours and fall fairs. And those who enjoy the ghouls and goblins of Halloween will be happy to know that events featuring lots of creepy characters have started to emerge as well.

Trip Planner and Suggested Itineraries

Get [trip planning inspiration](#) from a host of carefully curated experiences and trip ideas across this great province and customize one to suit your passion.

Northern Region

Thunder Bay area: 80% change with 60% leaf fall

Predominant colours:

Yellow/gold with hints of red

Best viewing opportunities:

- Thunder Bay Lookout
- Marie Louise Lake Picnic Area, Sleeping Giant Provincial Park

Take a beautiful fall hike and explore the Sibley Peninsula at Sleeping Giant Provincial Park.

The drive along the Nor'Wester Mountains just south of Thunder Bay along Hwy 61 is a great touring destination where the unique few stands of sugar maples have turned a bright red.

Several walking trails within the city limits (Cascades, Centennial Park, Mills Block) or in nearby provincial parks such as Kakabeka Falls, where there has been significant colour change, are a great way to get out and enjoy the fall colours.

Sault Ste. Marie/Agawa Canyon: 60% change with 20% leaf fall

Predominant colours:

Green, yellow and orange; the reds have fallen in Agawa Park; Batchawana Bay is reporting hints of orange with 20% leaf fall; in Lake Superior Provincial Park 70% change with lots of orange and red in the southern end of the park 30% leaf fall

Best viewing opportunities:

- A great way to take in the beauty of the Algoma region and see the picturesque landscape that inspired the Group of Seven is aboard the [Agawa Canyon Tour Train](#) which runs daily until October 15. Book early to avoid disappointment.
- Edmund Fitzgerald Lookout at Pancake Bay Provincial Park offers spectacular views of Pancake Bay and Lake Superior
- Hiking Nokomis, Orphan Lake, Awausee, Towab and the [Coastal Trail](#) in Lake Superior Provincial Park. Paddlers: Mijinemungshing Lake and Rabbit Blanket Lake are good choices for excursions; rental canoes are available. Drop by the Agawa Bay Campground Visitor Centre for suggested trails and other park information until October 10.
- Twin Bridges Trail in Chutes Provincial Park
- The beach overlooking Batchawana Island and the surrounding hillsides

[The Grand Algoma Route](#) has been nicknamed by motorcycle enthusiasts as Ontario's "Tail of the Dragon" because of the miles of twists and turns that follow the Mississagi River. Get ready to enjoy jaw dropping scenery with the views of the Lake Superior coastline.

If you are up for a challenge, put the four-acre [corn maze](#) at Mockingbird Hill Farm on your 'to do' list. It's open daily till near dusk and late on Flashlight Friday and Saturday nights.

The [Algoma Fall Festival](#) celebrates the arts and runs the month of October. Music, Group of Seven art, photography, acclaimed authors and chefs all share the spotlight.

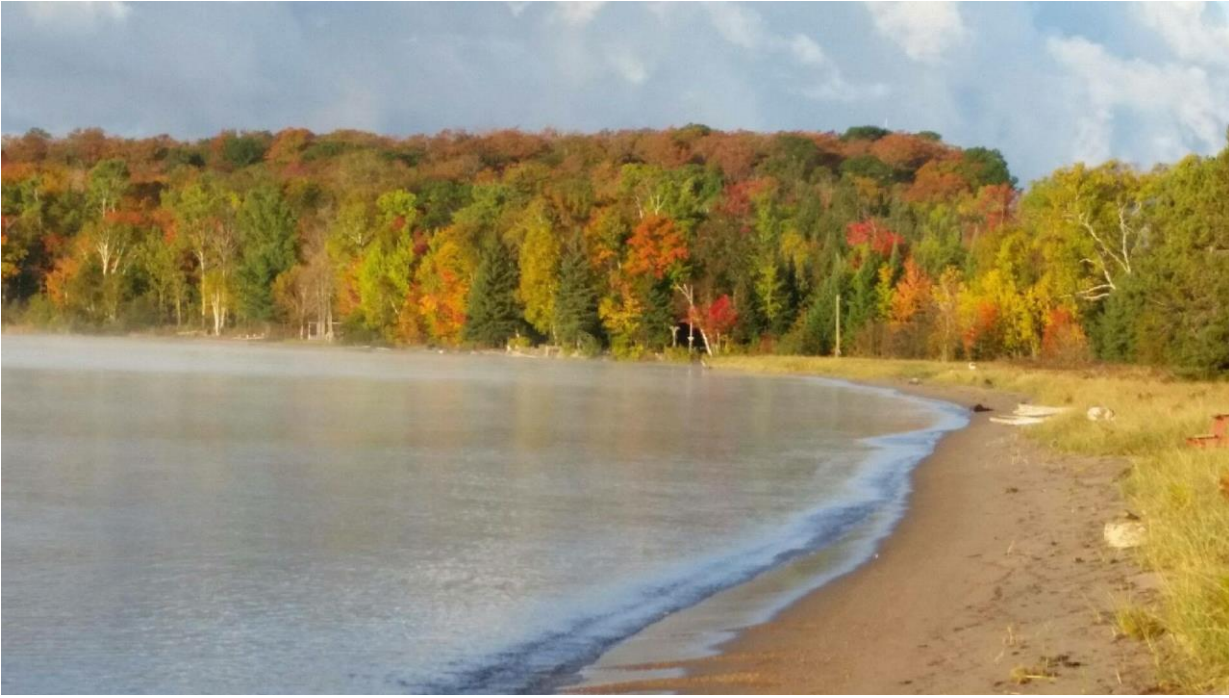


Photo: Sault Ste. Marie

Northeastern Ontario: 60 - 70% change with 30% leaf fall

Predominant colours:

Reds and yellows with pockets of green

Best viewing opportunities:

- Onaping High Falls' A.Y. Jackson Lookout
- Temagami Fire Tower Lookout, Caribou Mountain
- Eau Claire Gorge, Amable du Fond Provincial Park

[Point Grondine Park](#), is Northeastern Ontario's newest backcountry hiking and camping destination. Part of Wiikwemikong Unceded Territory, you can experience it with an Indigenous guide. Enjoy the fall colours from Recollet's Summit, a vantage point with great views of the La Cloche Mountains, Silver Peak in Killarney, and treetops for kilometres. The entrance is on Highway 63 heading towards Killarney.

Hit the road on the [Lake Temiskaming Tour](#). The looping distance of about 450 km offers a weekend of sightseeing at stellar locations such as Devil's Rock. About 5 km from Haileybury, view the Ontario-Quebec border from the edge of a cliff at a height of over 300 metres, then climb the Caribou Mountain fire tower for a stunning 360 degree view of an ancient, largely untouched forest.

Every weekend until Halloween, you can visit [Leisure Farms](#) in Sturgeon Falls for homemade goodies, pumpkin picking, wagon rides, a corn maze, and haunted barn tours.

Central Ontario Region

Algonquin Park: 90% change; 40% leaf fall; past Peak colour

Predominant colours:

Orange

Best viewing opportunities:

After an unusual start to this year's, some of the Park's best colours of the season were on display last weekend. They are now past peak with trees near the West Gate beginning to look bare. Once you travel east of the West Gate, there are still some good colours along the Highway 60 Corridor but they not expected to last long.

The [Golden Encore](#) is beginning as the poplar, tamarack and birch trees turn their signature yellow hue, so if you missed the maple peak, head out to enjoy the fall colours that inspired Tom Thomson. The [Algonquin Logging Museum](#) brings to life the story of logging from the early square timber days to modern forestry management. On the easy-to-walk 1.5 km trail, a recreated camboose camp and a fascinating steam-powered amphibious tug called an "alligator" are among the many displays.

Trails along the Hwy 60 corridor, at Lake of Two Rivers and Tea Lake picnic areas, the Tea Lake Campground, and the East Beach Picnic Pavilion all offer great hiking and picnic opportunities and the first loop of the [Minnesing Mountain Bike Trail](#) is open for hiking and biking.

If you're driving through the park plan to stop at [Killarney Lodge](#) for lunch or dinner. Set on a peninsula surrounded by Lake of Two Rivers in the heart of the park, the lodge has a reputation for fine country dining.

[Parry Sound area](#): 60% change; 30% leaf fall

Predominant colours:

Reds and oranges

Best viewing opportunities:

Stroll or bike along the 6.5-km waterfront trail that hugs the shores of Georgian Bay, known locally as 'the fitness trail. Follow the pink granite path along the waterfront and enjoy the amenities of 5 fitness stations. Want more of a challenge? The 2.5-km North Shore Rugged Hiking Trail is located on the road-shore allowance of Parry Sound's Salt Dock Wharf to the Municipality of McDougall municipal boundary.

Killbear Provincial Park is open for camping and day use until the end of October. Take advantage of the recent great weather and plan an outing.

[White Squall](#) makes it easy for you to get out onto Georgian Bay for an autumn paddling excursion; rentals available from their paddling centre location north of Parry Sound, in Nobel.

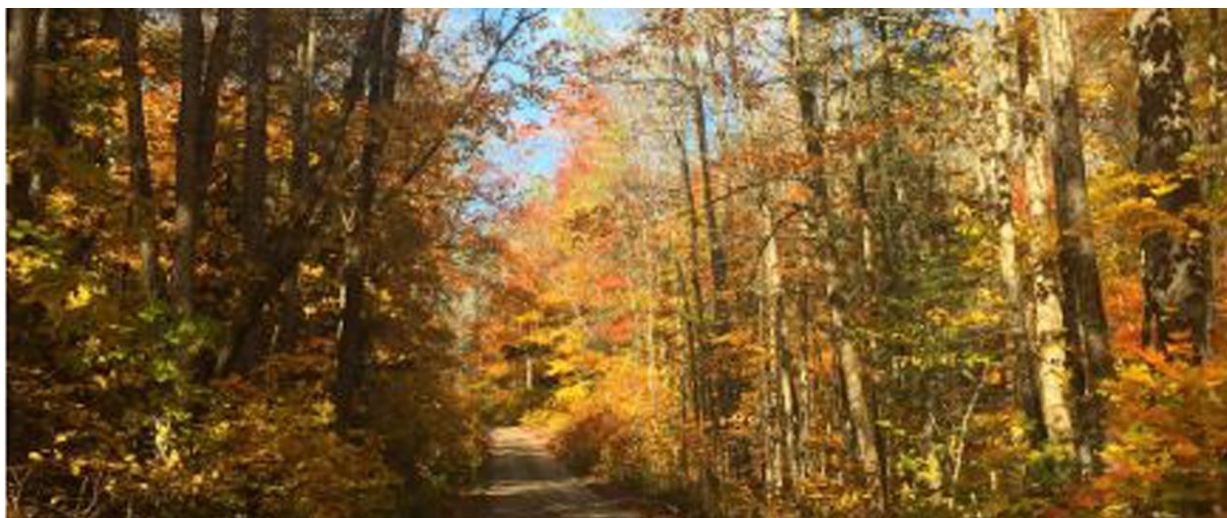


Photo: Parry Sound Tourism

Muskoka: 60 - 70% change; 20 - 30% leaf fall

Gravenhurst: yellow and orange predominate, with pockets of red

Bracebridge: yellow and orange predominate, with pockets of red

Huntsville/Lake of Bays: yellow and orange predominate, with pockets of red

Bala: yellow and orange predominate, with pockets of red

Georgian Bay: yellows with pockets of orange and red

Best viewing opportunities:

- Lions Lookout in Huntsville
- Huckleberry Rock near Port Carling
- Dorset Fire Tower in Dorset

Driving routes:

- Muskoka Rd 17 from Gravenhurst to Bracebridge; stop at Muskoka Beach for a gorgeous view of Lake Muskoka, sections of the road are canopy covered
- Hwy 117 to Baysville and Dorset, stop and walk along the river in the park then head to the Lookout Tower in Dorset
- Hwy 118 east Bracebridge to Hwy 35
- Muskoka Rd 13 - Severn Bridge to Torrance - is a winding road with lots of maple trees; stop and hike the Torrance Barren

Pick up a map from [Muskoka Tourism](#) and follow one of six suggested driving tours.

Muskoka Steamships have extended their [fall cruise season](#) until October 14. Step aboard the R.M.S. Segwun - the oldest operating coal-fired steamship in North America – and enjoy the haunting steam whistle sounds and the Segwun backs away from the dock.

Arrowhead Provincial Park north of Huntsville is home to 15 km of hiking trails; head to the Big Bend Lookout Trail to enjoy miles of scenic beauty. If you'd rather ride, there are two moderately challenging mountain bike trails – the 4.5 km Arrowhead Lake Trail and the 3 km Lookout Trail.

Minden/Haliburton: 80% change; 20% leaf fall

Predominant colours:

Green, with reds and yellows

Best viewing opportunities:

- Dorset Fire Tower, Hwy 35 north to Dorset, Twelve Mile Lake Falls
- Buttermilk Falls
- Leslie Frost Centre
- Marsh's Falls on the Oxtongue River
- around Carnarvon

Climb atop the [Eagle's Nest](#) in Bancroft for a breathtaking view of the York River Valley

Now is the time to head to the [Dorset Fire Tower](#) - the colours are spectacular. The tower's observation deck sits 142 meters (465 feet) above Lake of Bays and offers a breathtaking panoramic view. If you'd rather not do the climb, there are ground level lookouts, hiking trails picnic areas, and a gift shop.

Take a walk along the suspended canopy boardwalk that winds through the tree tops 20 metres above the forest floor in [Haliburton Forest's old growth forest](#). It's exhilarating!

There are 9.5 km of looped hiking trails at the Frost Centre to enjoy. Beginners might want to consider the Fire Tower and Lakeshore trails; the Vista trail provides an excellent view of Lake St. Nora and the Algonquin Highlands.

Barrie/Oro-Medonte/Ontario's Lake Country: 50% change; 30% leaf fall

Predominant colours:

Green, yellow and gold

Best viewing opportunities and suggested driving routes:

Download four great fall driving tour [route maps](#) for:

- Ontario Lake Country route: Hwy 12 from Orillia to Bass Lake, Hwy 400 to Coldwater
- Oro-Medonte route: Bass Lake Side Road to Hwy 93 and into Craighurst, on to Horseshoe Valley Road and Orillia
- Severn Route: Hwy 12 to Port Severn, Town Line to Division Road, Sparrow Lake Road to Washago and then Orillia
- Rama/Ramara Route: start at Rama Road and watch for Osprey nests

The viewing platform at the top of the Lookout Trail in Earl Rowe Provincial Park, or the East Beach, are great leaf peeping locations.

This is a great time of the year to experience the Maidenhair Fern Trail loop at Sibbald Point Provincial Park; pick up the trail brochure at the trailhead. St. George's Anglican Church, built in 1877, sits at the northwest corner of the park; its graveyard is the final resting place of famous Canadian authors Stephen Leacock and Mazo de la Roche. The park is open for camping until Thanksgiving and open for day use year round.

The Wye Marsh in Midland includes 25 km of hiking and biking trails. One-hour [guided voyageur-style canoe and kayak tours](#) onto the secluded marsh channels that are home to the midland painted turtle, bullfrogs, red winged blackbirds and river otters are available weekends to the end of October. Check out the observation tower and boardwalks; there are great opportunities for wildlife viewing and birding, including seeing the magnificent trumpeter swan.

Are you on the hunt for the perfect pumpkin? [Reynolds Pumpkins](#) in Cookstown, [Brown's Farm in Dalston](#), and [Rounds Ranch](#) in Elmvale have acres of them to choose from.

South Georgian Bay/Owen Sound/Blue Mountain area: 70% change

Predominant colours:

Green, with yellow, orange and red starting to show through

Best [viewing opportunities](#):

- Irish Mountain Lookout
- Epping Lookout
- Old Baldy Lookout
- Big Head River Valley Lookout
- Beaver Valley Lookout
- Scenic Caves Lookout
- Blue Mountain Lookout

Download printable [maps of four Great Scenic Drives](#) in South Georgian Bay.

Grey Roads 7 and 13 through the Beaver Valley are lovely right now.

Not much beats relaxing in the Scandinavian baths as you soak in the fall colours. Situated on 25 acres of natural Ontario birch, Canadian maple and pine trees, [Scandinave Spa](#) at Blue Mountain offers expansive views of the UNESCO World Biosphere Reserve Niagara Escarpment.

Discover interesting cideries, vineyards, bakeries, restaurants, cafes, museums, orchards and country markets as you tour the region along the [Apple Pie Trail](#).

East Region

The Kawarthas/Northumberland: 80 - 90% change; 60% leaf fall

Predominant colours:

Greens, golds, vibrant oranges, reds and yellows with leaf fall

Best viewing opportunities and suggested driving tours:

- Burleigh Falls
- Pedestrian suspension bridge over the Trent River Gorge

Download maps for great [fall driving tours](#):

- Ring Around Lake Stony
- Harvest Season in Harbour Town
- To Burleigh or Bust
- Leaf it to Lang
- To Buckhorn & Beyond

Take advantage of the great cycling routes in this area. Its rolling drumlin hills, scenic lake vistas and winding rural roads make for challenging and diverse riding opportunities and rural cafes along the way offer great rest stops. Download suggested [route maps](#).

Complete your [Canada150+ Geocaching Travel Diary](#). Travel throughout Peterborough and the Kawarthas and enjoy the fall colours while partaking in a treasure hunt.

Cobourg is home to one of the oldest farmers' markets in Ontario. Established in 1839 it offers locally grown and certified organic fruits and vegetables, crafts, flowers, seafood, meat, honey, cheese, bread, desserts and lots more.

Trek from tree to tree high in the canopy on fun games like suspended bridges, Tarzan swings, swinging logs, cable traverses and zip lines at [Treetop Trekking Ganaraska](#) in Campbellcroft. Open Wednesday thru Sunday.

Prince Edward County/Belleville: 40 - 50% change

Predominant colours:

Green, some hints of red and orange

Driving routes /viewing locations:

- Sandbanks Provincial Park
- Lake on the Mountain Provincial Park
- County Road 13 (from Richardson Lookout to Black River Cheese) – described as driving through a tunnel of leaves
- Victoria Road, Ameliasburgh
- Green Point, County Road 35

Take in the outstanding view high above Picton Bay at Lake on the Mountain overlooking the edge of the Prince Edward Escarpment and the Glenora Ferry below. From here you are only 10

minutes from the [County Cider Company](#), which also enjoys one of the County's best views. Drop by for a taste of cider or linger over a pizza lunch on the patio.

MacIntosh apples are ready for picking at [Campbell's Orchards](#). Pick your own seven days a week, nibble on hot dogs and corn on the cob, take a wagon ride or work your way through the corn maze. They've also got lots of fresh apple cider.

It's Pumpkinfest in Wellington this weekend. There will be giant pumpkins, pumpkin pie, pumpkin hats, and pumpkin parades to celebrate the season, local growers and pumpkin lovers.

Cornwall/Thousand Islands/Kingston: 50% change

Predominant colours:

Red and yellow

Driving routes/viewing locations

- Thousands Islands Parkway; this 40-km stretch of road runs parallel to the St. Lawrence River and affords fantastic views of the river, the 1000 Islands, the American mainland and the Frontenac Arch Biosphere's ancient granite ridges.
- Long Sault Parkway; a series of 11 islands connected by a roadway from Long Sault to just east of Ingleside
- Bach's Lookout overlooking Captain's Gap, Charleston Lake provincial park

The [hiking trails](#) within Charleston Lake Provincial Park are varied and include distances for hikers of every experience level. Each trail has a theme, and the shorter and relatively easy east side Shoreline Centennial, Sandstone Island, Hemlock Ridge and Beech Woods Trails have interpretive trail guides available from the gatehouse.

Award-winning [Pumpkinferno](#) returns to Upper Canada Village featuring specially designed Canada 150 themed pumpkin-carved displays. Tour this spectacular outdoor art exhibit of 7,000 handcrafted pumpkins all lit at night along a kilometer long path against the village's picturesque 19th century backdrop.

Take a spectacular fall colour [1000 Islands Helicopter Tour](#). Fly to Seeley's Bay and travel along the historic Rideau Canal system, enjoying aerial views of Jones Falls, Davis Locks, Chaffey's Locks and Rock Dunder.

Ottawa: 20 – 30% change

Predominant colours:

Green, with pockets of orange and yellow

Best viewing opportunities:

This is the last weekend to visit [MosaïCanada 150](#), a spectacular horticultural celebration celebrating the art of mosaiculture and a tribute to Canada's 150 years of history.

Just 15 minutes from Parliament Hill, [Gatineau Park](#) is a favourite leaf peeping destination. Enjoy hiking/cycling trails and lookouts and drive the Sir John A. Macdonald parkway away from the downtown core and towards West Ottawa and Nepean for beautiful scenic views across the Ottawa River. A free [shuttle bus](#) is also available and departs from the ByWard Market

This is the last weekend to see [MosaïCanada 150](#), a spectacular horticultural celebration of the art of mosaiculture and a tribute to Canada's 150 years of history.

Take a [Haunted Walk](#) of Ottawa. This exceptionally popular tour explores the haunting of the Bytown Museum, Château Laurier, Grant House and more, and is a tried and true favourite.

By day, [Saunders Farm](#) is great spot where families can navigate mazes, visit a petting zoo, and take in puppet shows. By night, it turns into a festival of frights that includes a walk through the Barn of Terror and a trip through the woods on the Haunted Hayride.

Ottawa Valley: 40% change

Predominant colours:

Green with some reds and yellows becoming more prominent

Best viewing opportunities and suggested driving tours:

- Barron Canyon, from Algonquin Park's eastern Achray entrance
- Shrine Hill Lookout, Wilno
- Westmeath Lookout
- Home Fires Park overlooking the Ottawa River, Petawawa

[Download maps](#) for these great driving tours:

- Up The Mighty Ottawa
- A Trail of Two Rivers
- Switchbacks and Shorelines
- The Historic Opeongo Line
- Friends and Neighbours

Ride the chairlift at Calabogie Peaks Resort up 780 feet to the top of Dickson Mountain for a breathtaking view of the beautiful Ottawa Valley. At the top, explore the Skywalk interpretive hiking loop and walk down any of the ski trails or enjoy a ride down the chairlift when you are ready to return to the base of the mountain. Download the [Manitou Mountain hiking map](#).

Celebrate the harvest at [Taste of the Valley](#) on Saturday at the Cobden Farmers' Market. There will be over 100 vendors with lots of delicious foods to tempt your palate.

[Fulton's Pancake House & Sugar Bush](#) have four marked walking trails through their forest for you. Afterwards, head to their Maple Shoppe (open Tuesdays and Thursdays) to sample maple syrup, gourmet maple products and maple candy, and browse their local artisan giftware.

Southwestern Ontario Region

Stratford, Fergus & Elora: 40 - 50% change

Predominant colours:

Yellow and orange with pockets of red

Best viewing opportunities:

- Elora Gorge; riverside trails and scenic overlooks provide hikers with stunning views

Just outside of London (Highway 401, exit 203), Thorndale's [Apple Land Station](#) is a great spot for apple picking and pumpkins. They are also famous for their mile high apple pies. Just sayin'.

A 47-km trail linking the Credit Valley watershed to the Grand River, the [Elora Cataract Trailway](#) follows the old CP rail bed. It runs through rolling countryside east of Elora, historic Fergus and past Belwood Lake. Hike or bike it to enjoy the beautiful changing scenery.

Savour the flavours of the harvest along the [Savour Stratford Pumpkin Trail](#). Enjoy delicious pumpkin treats like freshly baked pie, pumpkin fudge, Thai pumpkin soup and pumpkin spiced coffee along the trail through to October 31. Download the [brochure](#) .

Enjoy getting lost in the [Thamesville Corn Maze](#), day or night. Ride the cow train, meet the animals and marvel at the corn cannon.

Windsor & Essex County: 40 - 50% change

Predominant colours:

Green and yellow, with vibrant oranges and reds

Best viewing opportunities:

Navigate miles of scenic shorelines along the [St. Clair River & the Shores of Lake Huron](#) by motorcycle and discover charming waterfront communities.

Hop on your bike to pedal the peninsula from Windsor's stunning riverfront to the province's southernmost National Park, Leamington's Point Pelee. Download the [map](#).

[Reapers Realm](#) hosts the only haunted forest ride in Canada; they also have the Vault of Terror, Coffin Rides, and Reapers Putt Putt. It's a lot of terrifying fun for the whole family, if you dare...

Niagara Region

Niagara Falls: 20 - 30% change; 30% leaf fall

Predominant colours:

Yellow/green, with pockets of red and orange

Best touring/viewing opportunities:

- Brock's Monument, Queenston Heights
- Niagara River Parkway - Fort Erie to Niagara-on-the-Lake

Head out onto the beautiful Niagara Parkway bike path with a bike (or maybe a bicycle built for two) from [Zoom](#) in Niagara-on-the-Lake. Or let them take you on a guided winery or craft brewery tour. They also do custom tours.

From haunted barns to wagon rides and a bucking cow ride, there's lots of fun to be had at [Howells Pumpkin Farm](#).

This weekend, [Cabernet All The Way](#) as you savour the flavours of Niagara Wine Country with an exclusive complimentary touring pass. Four participating wineries will celebrate all things Cabernet with tastings of some of the best wines in Ontario.

Toronto and Region

Burlington: 30 - 40% change

Predominant colours:

Reds and yellows with pockets of green.

Best viewing opportunities:

Plan a walk or hike through the natural areas and the Arboretum at the Royal Botanical Gardens; they've got [over 27 km of nature trails](#) to enjoy. The new [Anishinaabe waadiziwin Educational Trail](#) just opened; it explores plants used by the Anishinaabe peoples, and their connections to culture, language, ecology and history; download the map.

Tour the streets and alleys of Hamilton on a [ghost walk](#), including the Royal Connaught Hotel, Right House, Hamilton Place Theatre and the Pigott Building. Discover the ghosts of Whitehern, the gremlins in the bell tower and the city's strange connection to a killer named Jack.

Caledon and area: 40 - 50% change; 20% leaf fall

Predominant colours:

Green, with dark orange and yellows

Best viewing opportunities and suggested driving routes:

- Cliff Top Trail, Mono Cliffs
- The roads and side roads in West Caledon - west of Airport Rd and North of Old Base Line Road (Regional Rd 12) all offer great viewing.
- In and around the hamlets of Belfountain, Cheltenham, Alton and Inglewood offer quaint shops and pretty vistas
- Airport Road north of Caledon East to Hwy 9, and Glen Haffey Conservation area offer great hiking and views, as does Hwy 10 north to Orangeville. [Download the map](#).

Pack the kids into the car and head to [Downey's PumpkinFest](#) in Caledon from now til end of October. There's lots of fun to be had on the farm including wagon rides, the Boo Barn, puppet shows, and an amazing 8-acre corn maze.

York, Durham, Hills of Headwaters, Hockley Valley: 50 - 60% change

Predominant colours:

Reds and yellows with some green

Best viewing opportunities and suggested driving tours:

Fall is in full swing with farmers' markets, orchards and pumpkin patches ripe for the pickings. Find your favourite [u-pick](#) experience.

Surrounded by 100 acres of forested landscape and a network of paths and hiking trails, the [McMichael Gallery's](#) 6,000-piece Canadian art collection includes works by Tom Thomson, the Group of Seven, First Nations, Metis and Inuit artists. Explore the grounds and the outdoor art, and then go inside to see visit the [Group of Seven Guitar Project](#).

Toronto and area: 40% change

Predominant colours:

Green with reds and yellows starting to show

Get outside and explore nature in High Park on a [Family Nature Walk](#). Led by nature interpreters, they are a chance to discover the park's natural wonders including incredible savannahs, woodlands and wetlands. Remember to dress for the weather.

Take a trip to the top of the CN Tower to enjoy a bird's eye view of the cities colours. Two new floor-to-ceiling [Window Walls](#) offer up spectacular views. One level down you will find the Glass Floor with a view 342 m (1,122 feet) straight down, and the Outdoor Sky Terrace.

Some of the great events happening across Ontario this weekend:

- [Ajax Pumpkinville](#) – Oct 14
- [Bala Cranberry Festival](#) – Oct 13- 15
- Blue Mountain – [Fallicious](#) – Oct 10 – Nov 30
- Bowmanville – [Apple Festival and Craft Sale](#) – Oct 14
- Buckhorn – [Buckhorn Pumpkinfest](#) – Oct 14-15, 21-22, 28-29

- Campbellville – [Spooktacular Halloween at Mountsberg](#) – weekend until Oct 29
- Capreol – [The Terror Train 2077](#) – until Oct 30
- [Chapleau Arts and Crafts Fall Fair](#) – Oct 13 – 14
- Clarkson – Port Credit – [Annual Lakeshore Art Trail](#) – Oct 14 - 15
- Coldwater – [Scream Shak](#) – Oct 13 – 14, 20 – 21, 27 – 28
- Dundas – [Beyond the Valley Studio Tour](#) – Oct 14 – 15
- Elmvale – [Rounds Ranch Pumpkin Mania](#) – Oct 14 -15, 21 – 22, 28 – 29
- Grand Bend – [Lambton Fall Colour & Craft Festival](#) – Oct 14 – 15
- [Guelph Studio Tour](#) – Oct 13 - 15
- Halton Hills – [Terra Cotta's Fall Festival](#) – Oct 14, 21 & 28
- [Keene Pumpkin Festival](#) – Oct 14
- Kingston – [Fort Fright](#) – Oct 12 – 29
- Kitchener-Waterloo [Oktoberfest](#) – until Oct 14
- Milton Area – [Fall Into Nature with Conservation Halton](#) – Oct 14 – 15
- Morrisburg – [Pumpkinferno](#) - until Oct 29
- Munster – [Fright Fest](#) – Oct 13 – 31
- Penetanguishene – [Pumpkinferno](#) – Oct 12 – 30
- [Richmond Hill Studio Tour](#) – Oct 14 - 15
- Thunder Bay – [Haunted Fort Night](#) – Oct 12 - 15, 19 – 22, 26 - 29
- Tottenham - [Fall Colour Excursions on the South Simcoe Steam Train](#) - until Oct 15
- [Waterford Pumpkinfest](#) – Oct 13 - 15
- Whitchurch-Stouffville – [Studio Tour & Sale](#) – Oct 14 – 15
- [Windsor Craft Beer Festival](#) – Oct 13 - 14
- Woodstock – [The Woodstock Fleece Festival](#) – Oct 14

Fall Agricultural Fairs are lots of fun and a great addition to your fall colour tour. Information on those underway this weekend can be found in our [calendar of events](#).

Contact: Kevin Forget
Ontario Travel Information Centre, Barrie